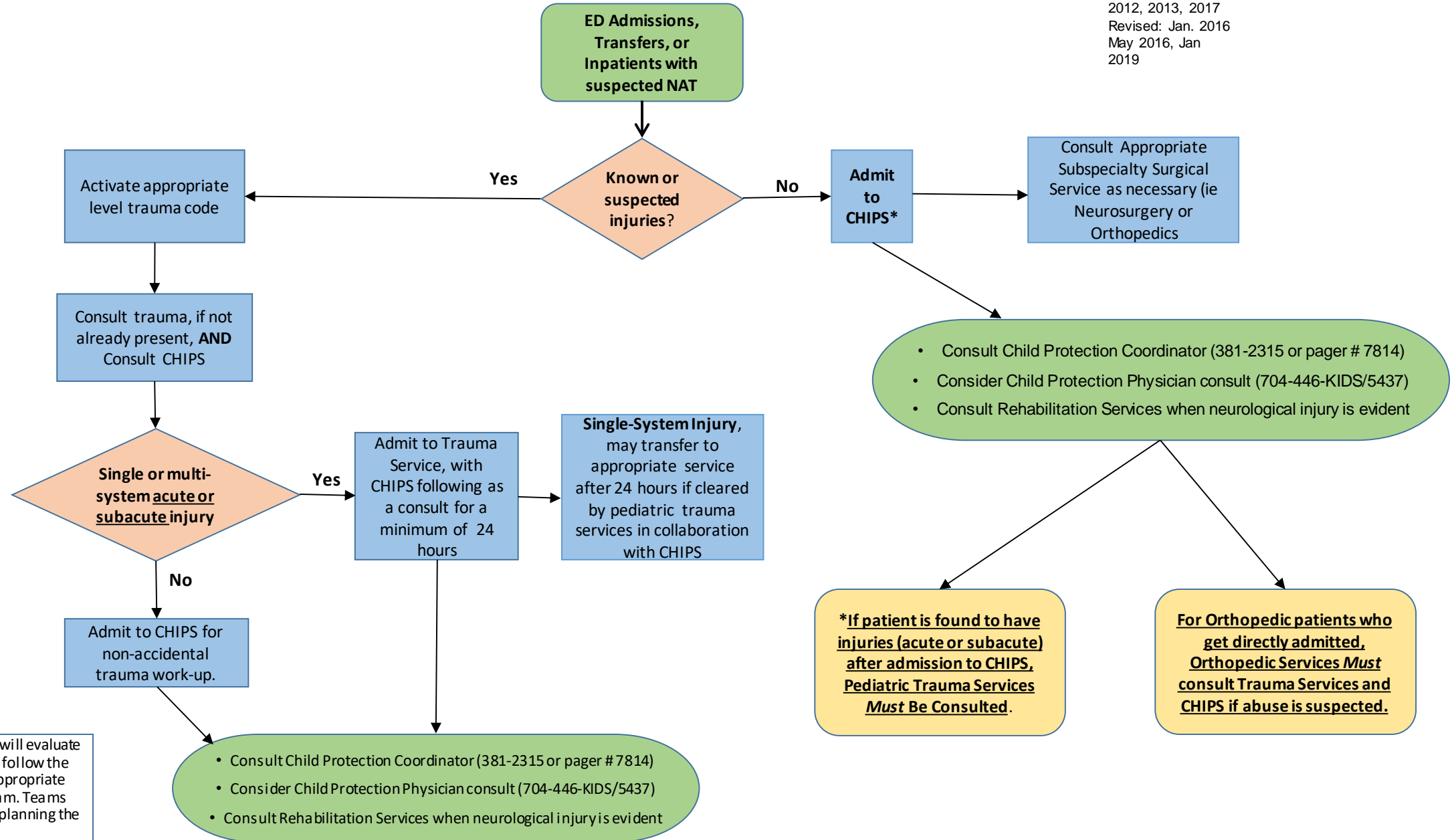


Atrium Health Levine Children's Non-accidental Trauma Admission Algorithm

Written: Jan. 2006
 Reviewed: 2010,
 2012, 2013, 2017
 Revised: Jan. 2016
 May 2016, Jan
 2019



* Pediatric Trauma Surgery will evaluate the patient, document, and follow the patient's care as deemed appropriate by the Pediatric Trauma Team. Teams will work collaboratively in planning the patient's care.

- Facilities should also exclude from the registry those patients with known or suspected physical or sexual abuse for whom the admission is not injury related but rather for evaluation by social services.
- All calls for NAT from PCL should go through the CED. Patient will then be seen as a pediatric trauma alert or higher level activation as warranted by clinical presentation.
- Please discuss with admitting team all films done while in ED in an effort to decrease radiation exposure, as patient will likely have skeletal survey done after admission.
- Understanding that many orthopedic injuries are directly admitted, Orthopedic Services will consult Pediatric Trauma Services and CHIPS for any patient with suspected NAT.